

Registration Form

Name _____
 Address _____
 Telephone _____
 Number _____
 E-mail _____
 Hospital affiliation _____

Type of Practice

- Surgeon Anesthesiologist Intensivist
 General Practice Resident/Fellow
 Other (Paramedical, RRT, RN, Students)

Registration Fees (CAN/US\$)

Program Fee \$ 400

Residents*, Fellows* \$ 250

Total enclosed \$ _____

*Letter of verification from Dept. Chief must accompany applications for a reduced fee.

Course

- Nov 23rd 2013 January 25th 2014 April 5th 2014
 May 31st 2014

I authorize University Health Network to charge my

Visa MasterCard AMEX

Card #: _____

Expiry Date: _____

Signature: _____

If preferred a Money Order or Cheque made payable to:

Perioperative Echo Research Fund

No Onsite Registration available

A handling fee of \$50 is deducted for cancellations. Refunds requests must be received by mail on or two weeks before the Course.

No refunds will be made thereafter.

Mail to: Jo Carroll,

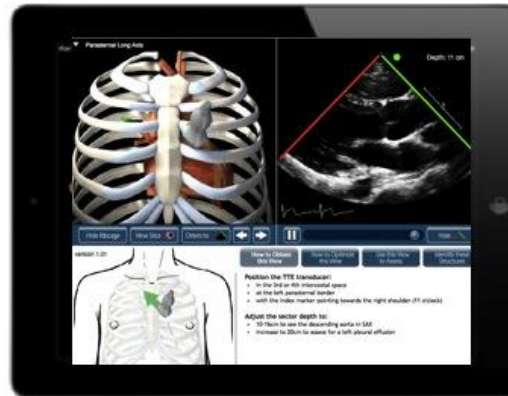
Department of Anesthesiology,
 Toronto General Hospital,
 200 Elizabeth St., 3EN-418
 Toronto, Ontario, Canada M5G 2C4
 FAX (416) 340-3698

E-mail: jo.carroll@uhn.ca



Echocardiography Simulator

During this course all participants will have unlimited access to a state of the art echocardiography simulator. This high-fidelity simulator is an integral part of the hands-on training to practice and understand standard views. A large bank of common pathology will also allow reproducing clinical scenarios and allowing the participants to integrate TTE into clinical decision-making.



Enhanced Learning

Perioperative Interactive Education (PIE) Standard Views App (<http://pie.med.utoronto.ca/TTE>), will be used during scanning of live models. This provides augmented 3D cardiac sono-anatomy to enhance learning at the bedside during the scanning sessions.



Department of Anesthesia and Pain Management
 Toronto General Hospital
 University Health Network

FOCUS Cardiac Ultrasound Course



Sponsored by
 University of Toronto
 Office of Continuing Education



Course

This 1-day course is designed to benefit practicing anesthesiologists, intensivists and anyone involved in the acute care of patients. It is intended to introduce physicians to the theory and practice of limited transthoracic echocardiography (TTE).

- No previous echocardiographic experience is required.
- The program is designed to allow **90% supervised hands-on** learning in a **1:4 instructor: student ratio**.
- Pre-course reading is necessary to maximize scanning time during the course. The reading package will be sent to each participant at the time of registration and includes links to on-line web-modules and a list of relevant references.
- Testing of theory (pre and post MCQ) and skills of all attendees will be part of the program.
- Completion of the program **does not certify** the participant for independent practice.

Course Objectives

Participation in the program will enable the attendee to:

1. Define 5 basic TTE views and the anatomical correlation used in a focused cardiac ultrasound exam
2. Obtain manual skills using a echo simulator mannequin to perform a limited TTE on healthy volunteers
3. Identify echo findings in common cardiac pathologies by using an echo simulator
4. Integrate FOCUS TTE exam in clinical scenarios for hemodynamic assessment

CME

This event is an Accredited Group Learning Activity (**Section 3**) as defined by the Maintenance of Certification Program of The Royal College of Physicians and Surgeons of Canada, approved by Continuing Education and Professional Development, Faculty of Medicine, University of Toronto up to a maximum of (**8 hours**). Each Section 3 hour is valued at 3 credits (**total 24 credits**).

CME Planning Committee

Drs. Massimiliano Meineri Annette Vegas,
Andrew Roscoe

Ms. Jo Carroll, Course Coordinator

Course Outline

7.45-8.00	Welcome and Introduction		
8.00-8.30	Pre-test		
8.30-9.00	FOCUS Views with Simulator		
9.00-10.30	Hands-on Session 1 Parasternal views/Knobology		
	Simulator	Model A	Model B
9.00-9.30	Group 1	Group 2	Group 3
9.30-10.00	Group 2	Group 3	Group 1
10.00-10.30	Group 3	Group 1	Group 2
10.30-10.45	Coffee Break		
10.45-11.30	Hands-on Session 2 Apical view		
	Simulator	Model A	Model B
11.45-11.00	Group 1	Group 2	Group 3
11.00-11.15	Group 2	Group 3	Group 1
11.15-11.30	Group 3	Group 1	Group 2
11.30-12.30	Hands-on Session 3 Subcostal views		
	Simulator	Model A	Model B
11.45-12.00	Group 1	Group 2	Group 3
12.00-12.15	Group 2	Group 3	Group 1
12.15-12.30	Group 3	Group 1	Group 2
12.30-13.00	Lunch		
	Sim ulator Cases and pathology review		
13.00-13.30	Tamponade, /LV/RV/Volume		
13.30-14.30	Simulator Cases		
14.30-15.00	Break		
15.00-16.30	Post Test		
	TEST on Simulator	MCQ	
15.00-15.45	Group 1	Group 2	
15.45-16.30	Group 2	Group 1	
17.00	Adjourn		

Faculty

Dr. Angela Jerath
Assistant Professor of Anesthesiology

Dr. Massimiliano Meineri
Associate Professor of Anesthesiology

Dr. Andrew Roscoe
Assistant Professor of Anesthesiology

Dr. Adam Snyman
Assistant Professor of Anesthesiology

Dr. Adriaan Van Rensburg
Assistant Professor of Anesthesiology

Dr. Annette Vegas
Associate Professor of Anesthesiology

Declaration of Potential Conflict of Interest

Speakers will disclose to the audience, any real or apparent conflict(s) of interest that may have a direct bearing on the subject matter of this program.

Location

Toronto General Hospital

Cardio Vascular Intensive Care Unit
Education Room
200 Elizabeth Street, 2 Peter Munk
Toronto, ON, M5G 2C4

Upcoming Courses

2013

- Saturday, November 23rd

2014

- Saturday, January 25th
- Saturday, April 5th
- Saturday, May 31st

Each Course is limited to a maximum of 12 participants